

# ANNUAL <sup>2009</sup> REPORT

Hitchcock Woods  
FOUNDATION

## BOARD OF TRUSTEES

As of 6/30/09

Randolph A. Wolcott  
Chairman

I. Lehr Brisbin, Ph.D.

Courtney W. Conger

Patricia E. Corey

Lee H. Dane

Nancy C. Francis

Iris W. Freeman

Patricia S. Goodyear

Peter L. Gray

William M. Hitchcock

Gail B. King

Lucy M. Knowles

Linda Knox McLean

W. Greg Paschal

Scott D. Riviere

Harry E. Shealy, Jr., Ph.D.

Timothy W. Simmons

Paul K. Simons

Dacre C. Stoker

Sandra E. Tucker

Sara S. Wood

## TRUSTEE EMERITUS

Samuel A. Cothran

## STAFF

Douglas E. Rabold  
Executive Director

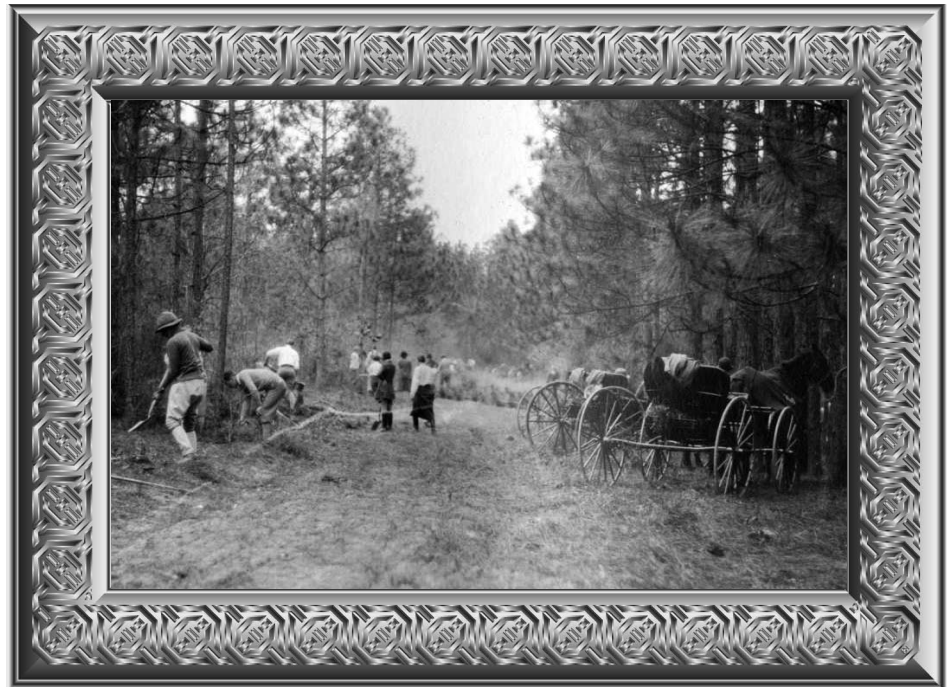
W. Bennett Tucker  
Woods Superintendent

Christine M. Reichel  
Administrator

Deon R. Mealing  
Woods Technician

(803) 642-0528

In September 2009 the Hitchcock Woods Foundation commemorates 70 years of service in protecting and preserving – and managing and maintaining – the Hitchcock Woods for the enjoyment of the community. The Foundation was established as a nonprofit in 1939. That year the Hitchcock family committed the original 1,191 acres. The Foundation later acquired more than 900 additional acres through the purchase or donation of adjoining tracts. Most of this acreage now is protected in a South Carolina Heritage Trust conservation easement signed in 1997, conserving their natural character in perpetuity.



(For commentary, see page 3.)

## BUSINESS PARTNERS

### \$1000 Level

All Star Rents  
Cold Creek Nurseries  
Mike Gorman Lightning Protection Systems  
Hass and Hilderbrand, Inc. #S  
Old School Construction #  
Southworth Photography  
The Stable on the Woods  
The Willcox #  
Woodside Farm "Hospice for Horses" S

### \$500 Level

Aiken Saddlery & Supply Inc.  
Cote Designs Floral  
Elliott Davis, LLC  
Southern Equine Services

### \$250 Level

Aiken Pet Sitters, LLC  
Bank of America Investment Services, Inc.  
Biddle Realty Inc. #

Boots Bridles & Britches  
The Carolina Real Estate Company #  
Dinner Bell  
Green Boundary Club #  
Home Medical Inc.  
International Ventures, Ltd. #  
Maxwell Law Firm #  
Phoenix Printing  
Savannah River Nuclear Solutions, LLC  
Security Federal Bank #  
M. Smart Custom Framing #  
Stoplight Deli #  
Wachovia Bank  
Woolhiser Law Firm

### \$100 Level

A. B. Beverage  
AgSouth Farm Credit, ACA  
Aiken Pest Control  
Aiken Veterinary Clinic  
Airmasters of Aiken, Inc. #  
Allstate, Tom Young

Atlantic Broadband  
Birds and Butterflies  
Brady's Best Buys  
Barbara Sue Brodie Needleworks  
Dr. Robert T. Buchanan and Dr. S. Taylor Garnett  
Martin Buckley, Architect  
Chime Bell Farm  
The Community Foundation  
Michael J. Costigan, Sr., CPA, LLC  
Cranston Engineering Group, P.C.  
East Coast Equine Dentistry  
Equine Dentistry - Gene Beaulieu, DVM  
Floyd and Green Jewelers  
Foxchase Stables  
Graves Auto Salvage #  
Darren Haeusler Farrier Services, LLC  
Suzy Haslup, Realtor  
Howell Printing Company #  
Hutson-Etherredge Companies #  
J.E. Stewart Builders, Inc. #

King Management, Inc. #  
Lionel Smith, Ltd. #  
Management Recruiters of Aiken #  
Andrew Marine, Attorney at Law #  
MB Jewelry & Beads  
Betsy Minton, Horse and Farm Insurance  
Newberry Hall  
Progressive Show Jumping, Inc.  
Southern Star Feed, Tack and Trailer Services  
Sporting Days Farm  
Stewart and Associates, Inc.  
Sweet Water Tree Farm, LLC #  
Ray B. Vaughters, Jr., MD #  
Nancy Wetmore  
Whiskey Road Foxhounds  
York Cottage Antiques  
Your Personal Assistant  
YourLogoWorks.com

# Charter Partners  
S Sustaining Partners

*The Foundation's fiscal year runs from July 1 to June 30, aligning our annual budget and operating schedule with the cycle of peak activity in the Woods, from early fall to late spring.*

## A YEAR OF LOOKING INWARD, FORWARD, AND OUTWARD

Walking in the Woods early in the morning is a highlight of my day. With the changes of season, variations of weather, and forces of nature at work in a natural forest, the experience is different every day. Yet one thing remains the same. The Hitchcock Woods is a constant source of great enjoyment, just as it will be for generations to come.

This past year has seen changes in the Board of Trustees, as we lost two former members. We were saddened by the loss of one of our past chairmen, John Seabrook, the consummate businessman, and the passing of our dear friend, Lucetta Knox, a longtime trustee and Master of the Aiken Hounds. Both "Jack" and "Cetta" have left an indelible impression on this organization.

To help prepare the board for the challenges of the future, a comprehensive board development initiative took root this past year. The Board of Trustees looked inward to maximize member participation and looked forward to ensure that the composition of the board in the future will be both faithful to the mission and vital to the community. This year the board welcomed a new trustee, Greg Paschal, whose community involvement, financial acumen, and love for the Woods serve these purposes well.

The Hitchcock Woods Foundation reached outward this past year in developing productive working relationships with a range of government bodies, particularly with the City of Aiken. Thanks to thoughtful planning and effective communication, three municipal infrastructure projects were completed in or near the Woods without incident. The City rerouted a municipal sanitary sewer line along Devil's Backbone by using a noninvasive directional boring technique, and installed new stormwater and fresh water lines on City streets near the Coker Spring entrance. We appreciate our visitors' patience while these necessary projects were underway.

Last October, the City and the Foundation, with the participation of the Center for Watershed Excellence at Clemson University, concluded an intensive ten month process of discussing alternatives for addressing erosion in the Hitchcock Woods caused by municipal stormwater runoff. Aiken County Council members and staff participated in these meetings, as did representatives from the South Carolina Department of Health and Environmental Control and the Department of Natural Resources. The process even attracted the attention of the U.S. Environmental Protection Agency, which also sent representatives to attend.

The City and the Foundation agreed to a

*"Each financial gift is essential to sustain the Foundation's important work, and all of those who support the Woods are valued and appreciated."*



Foundation's mission objective to preserve the Woods in an ecologically healthy state.

Equally important is the mission objective to uphold traditional equestrian and pedestrian uses of the Woods. This is best demonstrated in preserving the annual Aiken Horse Show, now going into its 94th year. The 2009 event was a big success, with record setting numbers of exhibitors and out of town participants. Special thanks to event Director Gail King, Assistant Director Linda McLean, the Aiken Horse Show Committee, and volunteers from the Aiken Hounds for their hard work and personal sacrifice in keeping this longstanding Aiken tradition alive.

This year also saw progress on several important capital initiatives. A few generous donors stepped forward with pledges totaling \$200,000 which will help retire the Foundation's debt on the purchase of critical acreage near the Coker Spring entrance to the Woods. The acquisition of this land was essential to preserve the quiet ambiance of this historic entrance. Thanks to a group of committed and gracious donors, the Foundation now is within sight of reaching its goal to pay off the loan taken to make this purchase possible.

Each financial gift is essential to sustain the Foundation's important work, and all of those who support the Woods are valued and appreciated. On behalf of the Board of Trustees, I extend a sincere "Thank you!" to each Friends of the Woods household, Business Partner, and donor for your continued financial and moral support.



Randy Wolcott, Chairman



Randy Wolcott moved to Aiken in 1989 and joined the board of Trustees in 1998. After serving on many board committees over the years, and chairing several of them, he was elected Chairman of the Board in 2008.

## MISSION

The mission of the Hitchcock Woods Foundation is to:

- protect and preserve the Hitchcock Woods in a natural and ecologically healthy state,
- maintain and manage historic and traditional equestrian and pedestrian uses, and
- foster education and research on the history and resources of the Woods.



## PRESERVING AN AIKEN LEGACY

The photo on the cover of this year's Annual Report depicts the original, storied Axe Club hard at work on trail maintenance in the historic Hitchcock Woods. Legions of community volunteers, many of them nationally known businessmen and socialites, worked alongside the Hitchcock family's staff in blazing trails, maintaining jumps, and tending to the Woods, equipped only with simple tools.

Today, members of the community participate in caring for the natural and recreational resources of the Woods primarily through their financial support. In fact, a group of generous donors made contributions last fiscal year to help the Foundation order two new 100-horsepower, four-wheel-drive John Deere tractors, enabling Woods Staff to perform work that once took scores of volunteers.

Other modern management tools are needed to further elevate the Foundation's important work. Mentioned in this report two years ago were a suite of critical needs that continue to this day. Among them were a Woods Maintenance Complex, new kiosks for all formal entrances to the Woods, a GPS based map, and a software model of the physical characteristics and management activities for all compartments of the Woods. Once funded, tools like these will help the Foundation to provide more efficient and more effective service to the community.

Until the early 1990s, for the most part, there was a single person on staff at a time.

Today the Foundation has a staff of four, clearly a modest workforce given the environmental and recreational resources of the Woods ... and the ambitious mission and vision of the Foundation. The many names of individuals and businesses in this Annual Report, along with the three letters, reflect the magnitude of this community effort and the meaningful progress that continues to take place.

This vast team effort is rounded out most importantly by you, the donor. It is your generosity and moral support that make all these pursuits possible. The Foundation's work is not subsidized by tax dollars or by an endowment, although interest on some reserve funds covered 6% of this past year's operating expenses. The balance had to be raised, as it is every year, by appealing to supporters like you who recognize the importance and value of the Hitchcock Woods.

Thanks to your help, the Foundation ended this past fiscal year just a shade in the black. When it became clear last fall that the current economy would impact annual contributions (and it did), budgeted expenditures were scaled back by 10%, keeping operating expenses in check and within

*"The many names of individuals and businesses in this Annual Report, along with the three letters, reflect the magnitude of this community effort and the meaningful progress that continues to take place."*



*The Foundation's staff consists of (from left to right) Doug Rabold, Bennett Tucker, Deon Mealing, and Chris Reichel.*

revenues. Special thanks are extended to supporters who worked on and attended three fundraising events this past year: the Aiken Steeplechase Association's Fall Fete, 302 Polo's Aiken Equine Charities Cup, and the sponsored Hunt Week Gala.

An enormous debt of gratitude is owed to Chris Reichel, who continues to serve faithfully and diligently behind the scenes as the Foundation's Administrator, a role she has held since January 2001. Chris handles extensive bookkeeping functions, database management, and donor letters, all of which will be streamlined with the transition to a new software package this fall. Chris provides critical fundraising support and is truly the tie that binds for the Aiken Horse Show. She accomplishes all of these roles capably and, remarkably, on a part-time basis.

This past June the Foundation bid well wishes to Carol Stewart, who accepted an offer of employment elsewhere after serving as Communications Specialist for nearly two years. We thank Carol for her many contributions.

Finally, community outreach was a major focus again this past year, with personal presentations on the Woods made to Aiken Newcomers Club, Aiken Junior Woman's Club, Aiken Sunrise Rotary, Leadership Aiken County (and its sister Junior program), and Aiken-Palmetto Kiwanis Club. Longtime trustee and former chairman Harry Shealy also spoke to various organizations and

conducted many guided tours of the Woods. Media visits to the Woods included CNN, Southern Living, Sandlapper, and Horse City TV.

Outreach expands in the current fiscal year as the Foundation holds the inaugural Festival of the Woods, a new annual event to celebrate the wide range of pedestrian uses of the Woods, and to provide education on the history and resources of the Hitchcock Woods. Participants will learn about the Foundation's stewardship of the Woods and how to experience the Woods more thoroughly and responsibly. In 2010, the event will be expanded from one day to two, with family activities for Friends of the Woods households scheduled for day two.

Thank you for participating in the great traditions of the Hitchcock Woods, both old and new.

*Doug Rabold has been involved in Aiken's business, civic, and cultural life since 1990. He was hired as the Hitchcock Woods Foundation's first Executive Director in October 2005.*

## VISION

The vision of the Hitchcock Woods Foundation is to maintain and restore the ecological integrity of the Hitchcock Woods and to serve as a model for sustainable urban forestry, balancing stewardship of forestland natural resources with compatible human uses.

## CAREFUL PLANNING LEADS TO IMPROVEMENTS

On a recent family vacation, a flight took us to an international airport in a major city. During our descent, I glanced through the window to see an example of suburban America, patterned neighborhoods with tiny yards and acres of pavement, exposed under the scorching July sun without a single mature tree to provide shade for the homes. My mind drifted home to Aiken and I was thankful for the open space we enjoy and for the natural character of this city which sometimes can be taken for granted. I had a sense of pride as the superintendent of one of the largest treasures in Aiken County and one of the largest urban forests in the nation.

Some of the highlights in the Woods this year include participating in a professional assessment of the implementation of the Foundation's ten-year ecological management plan, going on field trips to other managed forests in the area, making major progress on our prescribed burning program, training Woods Watch Volunteers, and responding to several serious incidents.

Back in 1998, when the Foundation contracted a team of researchers to prepare a forest management plan, the team recommended that the Foundation conduct an assessment of progress against its restoration goals after ten years, or in 2008. In response, last year the Foundation hired Julie Moore, a biologist with the U.S. Fish and Wildlife Service, to take on this task. An expert in the longleaf pine forest, Ms. Moore has been a part of the Tall Timbers Research Institute and the Longleaf Alliance.

On her own time and separate from her usual work, Ms. Moore traveled to Aiken on occasion for several days at a time. She visited each of the 49 management compartments in the Woods with various staff and trustees to investigate the progress of restoration over the past decade. Julie had spent much time in the Woods years ago, before active forest management was conducted, allowing her to see great changes through selective thinning and the prescribed burning program. Ms. Moore's assessment was helpful in focusing and directing management activities into the next decade.

This year various members of the staff and board made a few field trips to state owned and managed forest preserves in the area. These trips are designed to learn from other land management practices in the region. Two trips were to South Carolina Department of Natural Resources Heritage Preserves in Aiken County. Active timber management and prescribed burning are a part of the longleaf pine and wiregrass ecosystem restoration program at these sites. Future field trips will be to properties

*"My mind drifted home to Aiken and I was thankful for the open space we enjoy and for the natural character of this city which sometimes can be taken for granted."*



*The 65 miles of trails in Hitchcock Woods enable visitors to see a wide variety of ecosystems.*

managed by the U.S. Forest Service.

The prescribed burning program in the Woods was very successful this year, completing 253 acres of "fuel reduction" burns and 70 acres of "growing season" burns. Fuel reduction burns are conducted where there is a high level of fuel on the forest floor. These burns are conducted when the weather is cooler and the soil is damp to enable the fire to burn off the top layer of pine straw and leaves. Growing season burns are used where the fuel layer already has been reduced and are conducted when the weather is warmer. These burns are sometimes referred to as restoration burns because they help stimulate the seeding of native grasses.

Training was held this year for members of the Woods Watch Volunteer program for those who serve as extra eyes and ears – and sometimes feet – for the Foundation. Training paid off tremendously this spring in an incident that involved loose horses in the Woods. A Woods Watch command post was set up at the Stable on the Woods entrance. With the help of cell phones and the Woods Watch Volunteer call list, all entrances were secured within ten minutes. After the entrances were secured, a search took place with various staff and trustees, volunteers on horseback, and personnel from Aiken Department of Public Safety. Soon the horses

were located and were returned home safely.

CNN made an appearance to the Hitchcock Woods in May while covering the arboretum project in Aiken. Because of the proximity of the Woods to downtown, the reporter covered the Foundation's prescribed burning program and the benefits of reducing the risk of wildfire in the setting of an urban forest.

Thanks to Woods Technician Deon Mealing for his service, hard work, and dedication. Deon will mark his second anniversary with the Foundation in November. Actively managing a 2,100 acre urban forest is a big task, but it helps having a great assistant. As always, thank you for your continued support and I'll see you in the Woods!

*Bennett Tucker was hired as Woods Superintendent in June 2006. His many certifications in firefighting and first responder training strengthen our prescribed burn program and enhance our ability to work with public agencies in achieving more efficient response to incidents in the Woods.*

*To the attentive eye, each moment of the year has its own beauty, and in the same field it beholds, every hour, a picture which was never seen before, and which shall never be seen again. – Ralph Waldo Emerson*



## THANK YOU TO OUR GENEROUS CONTRIBUTORS

Cumulative giving from July 1, 2008, to June 30, 2009

**\$50,000 and Up**

Edgar T. Cato Foundation, Inc.

**\$10,000 to \$49,999**

Mr. and Mrs. Charles Bird, III  
Mr. and Mrs. Latham C. Burns\*  
City of Aiken Accommodations Tax Grant  
Shirley H and Benjamin Z Gould  
Family Foundation  
Richard and Sara McNeil#\*  
Margaret Mellon Hitchcock Foundation  
Mr. and Mrs. David Samson  
David H. Walker#\*

**\$5,000 to \$9,999**

The ABW & JRW Foundation, Inc.  
Aiken Steeplechase Association  
Barker Welfare Foundation  
Mrs. Charles Becker#\*  
Boots, Bridles & Britches‡  
Mr. and Mrs. Edgar T. Cato\*  
Ms. Elizabeth Darden\*  
Mrs. Roger B. Etherington#\*  
Nancy C. Francis\*  
Hollister Houghton#\*  
International Ventures, Ltd.#‡  
Michael Laughlin#\*  
Morning Sun Foundation  
Forrest Roberts#\*  
Savannah River Nuclear Solutions, LLC‡  
Security Federal Bank#‡  
Mr. and Mrs. Allan C. Sorensen#\*  
Mr. and Mrs. William H. Tucker#\*  
Elizabeth J. Witham#\*

**\$1,000 to \$4,999**

AgSouth Farm Credit‡  
Aiken Hounds  
Ms. Linda L. Algar and Mr. Scott Farrell  
All Star Rents‡  
Ms. Dione Appleton#\*  
Ashbrooke Equestrian Center, LLC  
Atlantic Broadband‡  
Bill and Ceelie Beacham#\*  
Berkshire Taconic Community Foundation  
Boston Software Systems, Inc.  
Albert C. Bostwick Foundation  
Charles S. Bostwick#\*  
Mr. Darnall W. Boyd  
Sharon M. Brown#\*  
Larry and Pat Byers#\*  
Courtney W. Conger#\*  
Alan and Pat Corey#\*  
Cynthia and Wayne Cross  
Dr. and Mrs. Scott Foshee\*  
Peter and Molly Gray#\*  
Miss Julia T. Hall  
Hass and Hilderbrand, Inc. #S‡  
Hathaway Family 1996 Charitable Trust  
Hathaway Family Foundation  
Mrs. W. Gibbs Herbruck#\*  
Mike and Lisa Hosang#\*  
Mr. and Mrs. Robert G. Hottensen  
Howell Printing Company#‡  
Drs. Douglas Hunter and Martine Duff#\*  
Mr. and Mrs. Robert L. Johnston  
David and Gail King#\*  
Lucy M. Knowles and Martin Buckley#\*  
Joan L. Lyman Charitable Lead Trust  
The MacMurray Family Charitable Fund  
Linda Knox McLean#\*  
R. Woodward Millen#\*  
The Mills Foundation  
John W. and Lisa S. Mitchell  
Frederick O. J. Muzi#\*  
Mr. and Mrs. Julian Peabody#\*  
Jim and Joey Peace\*  
Progressive Show Jumping‡  
Mark Rennie\*  
The Ridge at Chukker Creek  
Mr. and Mrs. Rhett C. Riviere

Scott D. Riviere#\*  
Joseph and Patricia Rothman#\*  
Mike Rubin\*  
Jon M. Samuels#\*  
Seabrook Foundation  
The Seymour H. Knox Foundation, Inc.  
Southeastern Architectural System  
The Stable on the Woods‡  
Jane Page and Mark Thompson#\*  
Barb and Tom Uskup#\*  
Sue and Nick Vasileff\*  
Ms. Ann Wicander and  
Mr. Joseph Vaillancourt\*  
Ms. Sarah Wildasin  
George and Gretchen Wintersteen\*  
Sara and Mike Wood#\*  
Woodside Farm "Hospice for Horses"‡S

**\$500 - \$999**

Aiken Newcomers Club  
Aiken Saddlery and Supply‡  
Dr. Jonathan H. Anderson and  
Dr. Mary Katherine Phillip\*  
Pim and Pat Andringa#\*  
Mr. and Mrs. Mark Berchtold  
Art and Suzanne Bremer#\*  
Buckleigh Farms Inc.  
Nancy A. Bush#\*  
James F. Capalino and Carlin Vickery\*  
Michael J. Costigan, Sr., CPA, LLC‡  
Diana Crowley#\*  
Sarah Dalton-Morris#\*  
Roger and Lee Dane#\*  
Mrs. Harriet Delaney  
Warren and Karen Dempsey#\*  
Mr. Bernard and Mrs. Patricia Dukes\*  
Easy Street Auto Sales  
Paul Eckersley\*  
Elliott Davis, LLP‡  
Jim and Susan Elmore\*  
Dr. Rose Lee Hayes and Mr. Stewart  
Bell Fox#\*  
Edward and Leslie Giobbe#\*  
Mr. Nelson Gunnell  
Mr. and Mrs. Benjamin B. Guy  
Dr. and Mrs. Anthony Harris  
Mr. and Mrs. David Hathaway\*  
Mr. B. Daniel Hazel  
S. Alger Howard#\*  
Mrs. Richard Jones  
Sherry D. Lukens\*  
Mr. and Mrs. Peter McHugh\*  
Mr. and Mrs. Charles F. Miller#\*  
Barbara Morgan and Fred Andrea\*  
Ms. Terri Morris  
Ltc. (Ret.) and Mrs. Robert E. Moore#\*  
Ms. Miriam Sue Morgan  
Mr. James D. Nance  
Barbara Nelson and Chuck Maxwell#\*  
Ms. Taylor Myers  
Eric and Julie Nettere\*  
Mr. Donald Nicolaisen  
C. Rodney O'Connor\*  
Greg and Michelle Paschal\*  
Mr. Bansil Patel  
Doug Rabold and Gene Eidson#\*  
Dr. and Mrs. John R. T. Reeves#\*  
Mr. and Mrs. Jeffrey J. Roberts#\*  
The Rockwood Trust  
Lito and Gina Salatino#\*  
Mr. and Mrs. Gus Schickedanz  
Tim and Monte Simmons#\*  
Mr. and Mrs. David Smith#\*  
Southern Equine Services‡  
Sporting Days Farm‡  
Alexandra S. Thomas#\*  
Mr. and Mrs. Charles Thomas  
Mr. R. E. Turner  
University of South Carolina Aiken‡  
Mr. and Mrs. Wolf von Teichman\*  
Nannie Von Stade Ward#\*

Charlotte and Edward K. Wheeler  
Foundation  
Randy, Girl and Caroline Wolcott#\*  
Mr. and Mrs. Victor Woolley  
Jesse and Connie Young#\*

**\$100 - \$499**

Mr. and Mrs. Barry Acord  
Aiken Barn, Bed and Breakfast, LLC  
Aiken Equine  
Aiken Junior Woman's Club  
Aiken Pest Control Company Inc. ‡  
Aiken Pet Sitters, LLC‡  
Aiken Polo Club  
Aiken Preparatory School  
Aiken Veterinary Clinics, PA‡  
Aiken Women's Club  
Airmasters of Aiken, Inc.#‡  
Dr. and Mrs. Robert Alexander#\*  
Mr. and Mrs. Robert J. Alexander  
Jacquie and David Allen#\*  
David and Ginny Allen\*  
Allstate, Mr. Tom Young‡  
Mr. David Andrews  
Laura Bagwell and Miles Denham\*  
Bank of America Investment Services, Inc.‡  
Barbara Sue Brodie Needleworks‡  
Pixie Baxter\*  
Dawn Beckering\*  
Biddle Realty, Inc.#‡  
Mr. and Mrs. William J. Blalock#\*  
Mrs. Jacquelyn M. Blanchard#\*  
Laura Boatwright#\*  
Birds and Butterflies‡  
R. Bongers Farrier's Serv. Intl Inc.  
Mr. and Mrs. Barry Bornstein  
Mr. Tim Bostock  
Mr. George H. Bostwick, Jr.  
Mr. and Mrs. Jimmy Bostwick  
Diane and Patrick Botula\*  
Mr. Geoff Bowden  
Brady's Best Buys‡  
Mr. and Mrs. Peter Brainard#\*  
Mr. Stephen Briggs  
Steve and Doris Briggs\*  
Donna and I. Lehr Brisbin#\*  
Mr. and Mrs. Donald C. Broderick, III#\*  
Mr. and Mrs. Leonard Browder#\*  
Michael and Diane Brunson#\*  
Mr. Everette Bryant  
Kit and Clyde Bryant#\*  
Mr. and Mrs. Robert Buchanan, Jr.#\*  
Dr. Robert Buchanan and  
Dr. S. Taylor Garnett‡  
Martin Buckley, Architect‡  
Mr. Wilkins Byrd  
Ms. Teresa Caine  
Mr. and Mrs. Kenneth Campbell  
Mr. and Mrs. W. Cothran Campbell  
Mr. Asa Candler V  
Catherine B. Carlisle#\*  
Mr. and Mrs. Milton W. Carothers, III#\*  
Lynn F. Carter#\*  
Mr. and Mrs. Douglas G. Cassidy\*  
Ms. Christine Cato  
Ms. Judith Bryan Cato  
Mr. John M. Caulfield  
Mr. and Mrs. Frederick J. Chamblin\*  
Ms. Loise B. Chapin  
Jenny and Ken Chase#\*  
Patricia T. Chelberg  
Lt. General and Mrs. Robert D. Chelberg#\*  
Mr. Sam Cheshire  
Chime Bell Farm‡  
Circle C Ranch  
Sally Cluff\*  
Mr. and Mrs. Tristram C. Colket, Jr.  
Charles Combier#\*  
Mr. and Mrs. Lawrence Comegys  
The Community Foundation‡  
Mr. and Mrs. Sam Conner

Mrs. Polly Cooley  
Rossie Corwon  
Mr. and Mrs. Samuel A. Cothran  
Mr. and Mrs. Robert Cottrell  
Mr. and Mrs. Tommy Coward  
Cranston Engineering Group, P.C. ‡  
Ms. Kasey Taylor Craven  
Keith and Georgeann Crawford\*  
Mrs. Jane Crayton Davis#\*  
Mr. Jon D. Crim\*  
Robert and Melissa Cross\*  
Bob and Vickie Cunningham#\*  
Judy L. Cunningham#\*  
Susan and George Dalzell#\*  
Darren Haeusler Farrier Services, LLC‡  
Ms. Patricia Davies  
L. Wayne and Judy K. Day#\*  
Paul and Kris d'Entremont#\*  
Daybreak Farm, LLC  
Jim and Dori Derr  
Mr. and Mrs. Jay DeVecchio  
Mr. and Mrs. Joe Devore  
Dick and Mary Lou Dewar#\*  
Mr. and Mrs. Anthony J. DiStefano#\*  
Michael and Joya DiStefano#\*  
Brendan and Julie Doherty\*  
Mrs. Linda Donovan  
Kim Dorfman#\*  
Horst and Amanda Dorner\*  
Mr. Bruce Duchossois and Mr. Jack Wetzel  
Mr. and Mrs. Edward W. Duffy  
Gary and Sarah Eakin\*  
East Coast Equine Dentistry‡  
Gregory L. and Stephanie S. Eaves\*  
Ms. Taryn Hartnett Eichler  
Shepard and Jane Ellenberg\*  
John H. Emery#\*  
Billy and Debbie Epling  
Equine Dentistry, Gene Beaulieu, DVM‡  
Equine Energy Inc.  
L. D. and Deborah C. Erb\*  
Sam and Donna Erb\*  
Mr. David Evans  
Ed and Genie Farmer#\*  
Mr. John Farmer  
Mr. Matthew Farmer  
Mr. Thomas B. Farmer  
Lucy Fenstermacher#\*  
Mr. and Mrs. Scott Ferguson  
Mr. and Mrs. Ronald Ferris  
Jim and Sandra Field#\*  
Angie C. Flanagan#\*  
Florida Equestrian Corporation  
Floyd and Green Fine Jewelers‡  
Foxchase Stables‡  
Ms. Anne Frazier  
Mr. Phil Frazier  
W. C. (Mike) and Iris Freeman#\*  
Ron and Carol Garrett#\*  
Ann D. Garvin#\*  
Anne, Jim and Ellen Geddes#\*  
John A. Gerstenberg#\*  
Stuart and Marian Gertman\*  
Mr. and Mrs. W. Gavin Gilmor  
Mr. and Mrs. C. E. Godley, Jr.  
Mr. and Mrs. James F. Godley  
Ms. Christie S. Goodwick

## KEY

- \* Friend of the Woods
- ‡ Business Partner
- # Charter Friend or Partner
- S Sustaining Partner

# CONTRIBUTORS

Robert and Patty Goodyear\*  
 John and Kitty Gordon\*  
 Mr. and Mrs. Bob Gore\*  
 Mr. Charles Graham  
 Rob and Amy Gray\*  
 Green Boundary Club‡  
 Doug and Irene Gregoric\*  
 Mr. Arthur Gregory  
 David and Catherine Griffin#\*  
 Mr. and Mrs. L. Scott Grimm  
 Mr. and Mrs. Stephen Groat#\*  
 Mrs. Jane Gunnell  
 Ms. Mary Guynn  
 Elke E. Haas#\*  
 Melvyn L. Haas#\*  
 Dr. and Mrs. John Haddon  
 Mr. and Mrs. George Handy  
 Mr. and Mrs. Rand Hanna\*  
 George and Diane Hano\*  
 Mr. and Mrs. Joseph Hardiman  
 Mr. and Mrs. Dennis Harkins#\*  
 Nancy and Bob Harrington\*  
 Law Offices of John W. Harte  
 Suzy Haslup, Realtor‡  
 Dr. Susie Haverstock and  
 Mr. Gregory Lee  
 David and Sue Hayes#\*  
 Steve and Jean Heard#\*  
 Mr. and Mrs. James Hedges  
 Lee and Jim Hedlund#\*  
 Cornelia and Faxon Henderson\*  
 Mr. and Mrs. Charles Herrick  
 Mr. and Mrs. Michael Hertzberg  
 Dr. and Mrs. Guy C. Heyl, Jr.#\*  
 Howard M. Hickey Jr. and  
 Linda C. Hickey, DVM#\*  
 Jim and Jackie Hill#\*  
 Mr. and Mrs. Peter H. Hill\*  
 Karl and Erin Hirschhorn\*  
 Thomas Hitchcock\*  
 Jim and Charlotte Holly#\*  
 Mr. Kerry C. Holmberg, MFH  
 Home Medical, Inc. ‡  
 Jean Fenton Honeck  
 Diane and Bob Horning\*  
 Mr. William E. Howard III  
 Mr. and Mrs. George W. Huiet#\*  
 Hutson-Etheredge Companies#‡  
 Mr. Mark Inman  
 Anonymous\*  
 Mr. and Mrs. James Jacks#\*  
 Mr. Lance Jacksland  
 Michael and Toni Jerome#\*  
 Robert and Susan Johnson#\*  
 Dana S. Jolley#\*  
 James C. Jordan#\*  
 Mr. and Mrs. Ronald J. Juvonen  
 Ms. Erin Kane  
 Mr. and Mrs. William R.  
 Kanne, Jr.#\*  
 Dean and Judy Keaton  
 Barbara B. Kemp#\*

Ms. Elizabeth Kenny  
 Ms. Virginia Hammond Khan  
 Andrew and Gray King#\*  
 Kristopher and Paige King#\*  
 King Management#‡  
 Ms. Teresa King  
 Dr. and Mrs. Mervyn Kipnis#\*  
 Ms. Angela Kirby  
 Mr. Angelo C. Kleronomos  
 Carolyn and George Klotzbaugh#\*  
 Ms. Barbara K. Kneece  
 Mr. Eugene Kneece, Jr.  
 Ms. Alice Knowles  
 Jean and Glenn Knowles#\*  
 Mr. John E. Korhonen  
 Mr. Brian Krex  
 Elizabeth and Michael Krysztofiak\*  
 Mr. and Mrs. Scott Lacher#\*  
 Mr. James B. Laughlin  
 Mr. and Mrs. Richard D. Law\*  
 Denise Lee and John Hamilton#\*  
 Patricia M. Lee\*  
 Mr. and Mrs. Donald Lemmon#\*  
 Mr. D. G. Lewis  
 Mara Baldwin Lewis\*  
 Mr. Albert P. Lindemann, III  
 Lionel Smith Ltd. #‡  
 Angela Little and Tate Hilliard  
 Bob and Gale Littlewood#\*  
 Mr. Chris Lowry  
 Brian and Kate Maddox\*  
 Ed and MaryAnne Majzlik#\*  
 Management Recruiters of Aiken#‡  
 Cynthia and Gary Mangum, Jr.  
 Andrew C. Marine, Attorney  
 At Law#‡  
 Mr. Ralph Marrinson  
 Mr. and Mrs. Chris Martin  
 Mr. and Mrs. Bill Matthews#\*  
 David Matthews and  
 Heather Greenstone\*  
 Tom and Barbara Matthews#\*  
 Gary Mauks and Susan  
 Preston-Mauks\*  
 Ms. Kiffin Maurice  
 Ms. Jo Mayer  
 Dan and Carroll Mayfield\*  
 MB Jewelry & Beads‡  
 Mr. and Mrs. Daniel McCarthy  
 Mr. and Mrs. Michael  
 McCormick#\*  
 Ms. Shirley S. McCutcheon  
 Ms. Jane McDonald  
 Mr. Sam C. McGill, Jr.  
 Mr. Robert McKee and  
 Ms. Marlene Macauley  
 Mr. and Mrs. David K. McKown  
 Dr. and Mrs. James McMillen  
 John and Susanne Mead\*  
 Mrs. Cindy Meares  
 Dr. and Mrs. Mark Meiler  
 Ruth Merriman\*

Edna S. Mills\*  
 Mr. and Mrs. G. A. Milner, III  
 Kathryn Milner#\*  
 Vivian G. Milner#\*  
 Betsy Minton, Horse and  
 Farm Insurance‡  
 Mrs. and Mrs. Jeff Minton  
 Ann and Larry Mitchell#\*  
 Mrs. William G. Mitsch, Jr.#\*  
 Kathy and David MoDesitt\*  
 Mr. Raymond Moffett  
 Bob and Kay Moody#\*  
 Richard and Risa Moon\*  
 Mr. Kermit D. Moore Jr.  
 Mossy Oaks Farm  
 Lynn Mullins#\*  
 W.C. and June H. Murff#\*  
 Mr. Dick M. Murphy  
 Kim Etherington Myers#\*  
 Mr. and Mrs. Sherry B. Myers#\*  
 Mr. and Mrs. Thad Myers  
 Ms. Helen Naylor  
 Newberry Hall‡  
 Rebecca T. Newell, MD#\*  
 Gerry O'Beirne\*  
 Mrs. Daniel O'Brien  
 Ms. Sharon A. O'Connor  
 On Board Media  
 Don and Pamela O'Neil#\*  
 James B. Osbon\*  
 Mr. and Mrs. Lucien Papouchado  
 Mr. Travis Page and Ms. Dione  
 Carroll  
 Tom and Mary Ann Parmelee#\*  
 Bill and Nancy Paschal#\*  
 Sally Patterson#\*  
 Mr. and Mrs. George Peckham  
 Katherine Penner\*  
 Anne Mitchell Pezzano#\*  
 Pfizer Foundation  
 Mr. Irving Phelps  
 Phoenix Printing‡  
 Mr. Steve Piercy  
 Judith A. Portmann#\*  
 Ms. Chris Powers  
 Mr. and Mrs. Robert Powers Jr.#\*  
 Rick and Kay Preston\*  
 Mr. Percy Price  
 Mr. and Mrs. Dennis Quinn  
 Mr. and Mrs. Chance Raehn  
 Anonymous\*  
 Marjory Fair Read\*  
 Ms. Nancy Read  
 Thea Reddy\*  
 Rick and Christine Reichel#\*  
 Robyn Reilly#\*  
 Jeffrey and Becky Reynolds#\*  
 David and Dorothy Ridley\*  
 MTR. E. Ringle\*  
 Chris Riviere#\*  
 Mr. and Mrs. Tom R. Rochester  
 Mr. and Mrs. Robert Rohland

Mr. Donald Rosato  
 Lydia L. Rose  
 Anonymous\*  
 Carol Ryder#\*  
 Mr. and Mrs. David Sacks  
 Sand River Woman's Club  
 Mr. and Mrs. Manfred Schack  
 Von Wittenau  
 Beat Schaffner#\*  
 Joan A. Schisler\*  
 Jean Schlichte#\*  
 Dr. and Mrs. Russell E. Schurtz\*  
 Patrick and Therese Scott#\*  
 Richard D. Sears, III#\*  
 M. Brannon Sell\*  
 Mr. and Mrs. Stan Shapiro  
 Dr. and Mrs. Harry E. Shealy, Jr.#\*  
 Dr. and Mrs. Paul Shealy  
 Mr. and Mrs. Dennis J. Simmons  
 Dr. and Mrs. Paul K. Simons#\*  
 Walker M. Sloan\*  
 Mr. and Mrs. Alexander J. Sloane  
 M. Smart Custom Framing#‡  
 Richard and Donna Smith#\*  
 Mr. and Mrs. Steve Smith  
 Marion Smoak#\*  
 Deborah J. Snyder\*  
 Shauna Rickerby Sober\*  
 Southern Star Feed, Tack and  
 Trailer Sales‡  
 Dr. and Mrs. Joseph D. Spencer#\*  
 Bob and Debby Stanton#\*  
 Mr. Robert Stanton  
 Mr. Phillip Staples  
 Ms. Cynthia Steinmetz  
 J.E. Stewart Builders, Inc. #‡  
 Randy and Carol Stewart\*  
 Stewart and Associates, Inc. ‡  
 Ms. Meredith Stiff  
 Mr. and Mrs. Robert Stoddard  
 Stockton Bates LLP  
 Mr. and Mrs. Dacre Stoker#\*  
 Gail Stoker  
 Stoplight Deli #‡  
 Robert and Judi Storey#\*  
 Barbara and John Strack\*  
 Mr. and Mrs. John C. Stupples\*  
 Mr. and Mrs. Michael J. Sullivan  
 Mr. and Mrs. Russell Summer  
 Sweet Water Tree Farm, LLC#‡  
 John and Kathy Theissen#\*  
 Mr. David Thieringer  
 Mr. and Mrs. George Thomas,  
 MFH's  
 Ms. Elaine G. Thomason  
 Mr. and Mrs. Joseph M. Tomaino#\*  
 Frampton W. Toole, Jr.#\*  
 Andreus Toth  
 Mrs. Lucy L. Tower  
 Mr. David Trachtenberg and  
 Mr. Rick Wilson  
 Mr. and Mrs. John C. Troutman#\*  
 Mrs. Mary Ann M. Tucker#\*  
 Mr. Thein and Ms. Turner  
 Toni Urben\*  
 Mrs. Deirdre Stoker Vaillancourt  
 A. B. Van Liew#\*  
 Linda Vanderslice\*  
 Mr. and Mrs. David Vaughan  
 Chris and Carol Verenes\*  
 Francois and Helene Verglas\*  
 Evelyn K. Vought\*  
 Mr. and Mrs. Robert D. Wade#\*  
 Wachovia Bank‡  
 Charles H. Wagner  
 Mr. Colton P. Wagner  
 Alice and Doug Walker#\*  
 Brad and Nancy Walker#\*  
 Ms. Suzette D. Walling and  
 Mr. Chris Romanek  
 Ms. Lellie Ward  
 Mr. Garth Weaver  
 Harry Weeks, Jr.#\*  
 Paul and Terry Weinle#\*  
 Mr. and Mrs. Ward Welch\*  
 Nancy Wetmore‡  
 Ron and Mary Wheeler\*

Whiskey Road Foxhounds‡  
 Mrs. Dexter G. White#\*  
 Brooks and Deanna Whitfield#\*  
 Charles Williams  
 Mr. and Mrs. John N. Wilson  
 Mrs. Roland H. Windham#\*  
 Oliver and Linda Wolcott\*  
 Susan Wood#\*  
 Woolhiser Law Firm‡  
 Dr. Stephanie Woollen  
 York Cottage Antiques‡  
 Mr. Robert M. Young  
 Mr. and Mrs. Thomas Young  
 Tom and Heather Young\*  
 YourLogoWorks.com‡  
 Your Personal Assistant‡

## Up to \$99

Aiken Master Gardener Association  
 Ms. Amanda V. Albrecht  
 Jed and Penny Alexander\*  
 Karen L. Alexander#\*  
 William and Kim E. Allen#\*  
 Mr. and Mrs. Charles Allocco  
 Mr. and Mrs. Michael Anaclerio#\*  
 Mrs. Edith Anderson  
 Ms. Susan Anderson  
 Debra Atwell\*  
 Ms. Della R. Bailey  
 Doris and Eugene Bailey#\*  
 Bank of America Matching Gifts  
 Elizabeth W. Baumann\*  
 Anonymous#\*  
 Drs. Baxt#\*  
 Richard G. and Charlotte R.  
 Baxter#\*  
 Mr. Harold Beacham  
 Spencer and Deri Beard\*  
 Ms. Heidi Beaumont  
 Mr. and Mrs. George Becker  
 Johanna Blue\*  
 Marvin and Lynda Blystone  
 Mr. and Mrs. Patrick Boardman  
 Jim and Idella Bodie\*  
 Brian and Donna Bogardus\*  
 Mr. and Mrs. James N. Boik  
 Mr. R. Trippett Boineau  
 Ms. Missy Boisvert  
 Mr. Tom Bossard\* and Mr. Len  
 Cherry  
 Dalton and Mary Boswell#\*  
 Mr. and Mrs. William Bowen, Jr.  
 Ms. Carroll Ann Bowers  
 Peter and Dorothy Bowers\*  
 Ms. Barbara Bowser  
 Helen Boyce#\*  
 Mr. and Mrs. R. F. Bradley  
 Ms. LeLee Brandt  
 Mr. and Mrs. Wade M. Brodie  
 Dr. and Mrs. Joseph R. Brooks#\*  
 Austi Brown\*  
 Sid and Esther Brown\*  
 George Edward Buggs\*  
 Dan and Michele Bullington#\*  
 Marsh and Lisa Burckhalter#\*  
 Mr. and Mrs. Frank Burke  
 Mr. and Mrs. Michael J. Burke\*  
 Ms. Anne Butcher  
 Sabrina Byrum and Nick Kimpel\*  
 Ronald M. Campbell\*  
 Tommy and Janey Carey#\*  
 Ms. Susie Carlson  
 Ms. Kara Casamassina\*  
 Mr. and Mrs. George R. Caskey#\*  
 Anonymous#\*  
 Barbara Cassidy\*  
 The Honorable and Mrs. Fred B.  
 Cavanaugh  
 Donald and Dolores Cerefin\*  
 Mr. and Mrs. Robert Chambers  
 Samantha Charles#\*  
 Cheryl M. Check\*  
 John and Nancy Church#\*  
 The Venerable Garrett M. and  
 Mrs. Ruth Clanton#\*  
 Mary E. Clarkson#\*  
 Bernadette Clayton#\*





- Robert B. and Mary Anne G. Clyburn\*  
 Mr. and Mrs. Martin Coffey  
 Mrs. Barbara Cole  
 Mr. and Mrs. Richard M. Combs, Jr.  
 Lori Comshaw\*  
 Bern and Ann Coneybeer\*  
 Joseph E. and Ann L. Conner\*  
 F. Leigh and Lois Cooper\*\*  
 Mr. and Mrs. Robert Coporale  
 Mr. Namon Corley\*\*  
 Mr. and Mrs. Edward R. Cornwell  
 Ann L. Coward\*\*  
 Robin and Ed Coward\*\*  
 Mr. Tom Cox  
 Bea Crawford\*\*  
 Ms. Amy K. Cross  
 Dr. Henry Philip Crotwell and Dr. Briana Crotwell  
 Timmerman\*  
 Mr. Kent Cabbage  
 John W. Cunningham\*\*  
 John and Deirdre Dabney\*  
 Tim and Anna Dangerfield\*\*  
 Kim and Nicolas David\*  
 Ms. Kim Davies  
 Lawrence S. Davis\*\*  
 Ms. Lucille Smith Davis  
 Jean P. Derrick\*  
 Robin Derrick\*\*  
 Ms. Mirabelle E. Dickhart  
 Mr. and Mrs. John Dietzel  
 Peggy Dils\*  
 Mr. and Mrs. Thomas Doker  
 Bruce and Maxine Eberhard\*\*  
 Claire H. Edenborg\*  
 Tom and Karen Egan\*\*  
 Dr. and Mrs. Richard Eisenberg\*\*  
 Mr. and Mrs. William S. Elkins\*\*  
 John and Mo (Maureen) Empic\*\*  
 Jimmie and Gail Engledow\*  
 John and Mary Jo Epps\*\*  
 Caryn D. Etherington\*\*  
 Richard and Ruth Ann Evans\*  
 Mrs. Nancy Eynon  
 John W. Faircloth\*\*  
 Abbey Farmer\*  
 Linda and Mick Ferrell\*  
 Robert and Katherine Ferris\*  
 Paul T. and Katherine Fisher\*\*  
 David Fleming  
 Mr. and Mrs. Michael Fleming  
 John and Gail Flintom\*\*  
 Ms. Marguerite Fogleman  
 Mr. and Mrs. Ralph W. Foster\*\*  
 Mr. Jefferson B. Fraser and Dr. Marion Minkwitz\*\*  
 Dr. and Mrs. Taylor Garnett  
 Lonnie A. Garvin\*\*  
 James B. and Trudy A. Gaughran\*  
 James M. Gaver\*\*  
 David and Pat Gilbert\*  
 Mr. and Mrs. Arthur Glassman\*\*  
 Megan and JP Godard\*  
 Donald K. Gordon\*\*  
 David and Courtneylove Gowans\*  
 Donna Graham\*  
 Mr. Gary E. Gumingo  
 Mrs. Joan L. Haase\*\*  
 Mr. and Mrs. Mike Hajjar  
 Robert and Laura Hall\*\*  
 Mr. and Mrs. James E. Hammond\*\*  
 Ms. Jennifer L. Hargett  
 Jan and Mark Harper\*\*  
 Ms. Jean Harris  
 David and Lynne Harrison\*\*  
 John and Jennifer Harte\*\*  
 Diane Haslam and Bruce Hammond\*\*  
 Mr. and Mrs. Jeffrey Heath  
 E. J. Heardt  
 Ron Henderson\*\*  
 Mr. and Mrs. Van W. Henley  
 Rev. and Mrs. Robert B. Hibbard\*\*  
 Barbara Hill\*\*  
 Mr. and Mrs. Thomas Hill\*\*  
 William and Elaine Hillan\*  
 Peggy M. Hitchcock  
 Rosalie and William M. Hitchcock\*\*  
 Ms. Stephany Hitchcock\*  
 James F. and Susan Hodges\*\*  
 Mr. and Mrs. Nicholas B. Hofmann\*\*  
 Mrs. Laura C. Holley\*\*  
 Mr. and Mrs. Larry Holley\*\*  
 Ms. Marlene Holmes  
 Mr. James O. Huber  
 Jane Adriance Huff\*\*  
 JW "Sam" Huff and Janet L. Huff\*  
 Carl and Marlene Huffman\*  
 Pete and Tricia Hughes\*\*  
 Linda and Sam Hunley\*\*  
 Mrs. Diana Hunt  
 Marilyn Hurler\*  
 Drs. Louis and Christine Huzella\*\*  
 Bonnie Ideal\*\*  
 Kevin and Sylvia Igoc\*\*  
 Rich and Linda Izard\*\*  
 Robert T. Jackson\*\*  
 Mr. John R. Jacobs  
 Sandra and David Jameson\*\*  
 Lynn Carlisle and Craig Jarvis\*\*  
 Mr. David Jensen\*  
 Ms. Irina Joche  
 Doris and Henderson Johnson\*\*  
 Nancy Johnson\*  
 Wade and Gayle Jones\*  
 K. D. Justyn\*  
 Teresa Kane\*\*  
 Jim Kannenberg\*\*  
 Anonymous\*\*  
 Alan and Margaret Keeler\*  
 Sheila Keenan\*\*  
 Mr. and Mrs. Paul E. Kendall, Jr.  
 Arthur and Cathy Kepes\*\*  
 John G. and Loretta E. Kiely\*  
 George and Nancy Kierspe\*\*  
 Mr. and Mrs. George Kierspe  
 John and Suzi Kilgo\*  
 Kyle Kipnis\*\*  
 Mr. and Mrs. Kenneth Kirschner  
 Anne B. Kiser\*  
 Mr. Eugene Kneece  
 Mr. and Mrs. W. Heze Kneece  
 Dr. and Mrs. Warren Koehl Jr.  
 Scot and Christy Kraeuter\*\*  
 Fred and Eleanor Krisch\*\*  
 Kurt Krucke and Clare Buchanan\*\*  
 Mr. and Mrs. Nicholas Kuehn, III  
 Mr. Samuel J. Kursh and Ms. Elisabeth W. Harpham  
 Peter and Debbie LaBerge\*  
 Ms. Rhonda Lang  
 Mr. and Mrs. John E. Lapak  
 Ms. Janet Larson  
 Mr. Peter Larson, Jr.  
 Ann E. Lawhorne\*  
 Desiree S. Lawless\*\*  
 William Lawless\*\*  
 Douglas Leader\*\*  
 Dr. and Mrs. Ronald Lee\*\*  
 Ms. D. J. Leipprandt  
 Mr. and Mrs. Richard D. Leitner  
 Gerard J. and Mary K. L'esperance\*  
 Hal and Leslie Lewis\*  
 Mr. and Mrs. G. Samuel Lightner  
 Christopher T. Linen\*\*  
 Mr. Bryce M. Lingo\*  
 Mr. and Mrs. Bradley Link  
 Robert E. Lofgren, DMD\*  
 Mr. and Mrs. John E. Loveland  
 Ken Lucas\*\*  
 Ted MacDermott\*  
 Stacy MacDonald\*  
 Scott MacMurray\*\*  
 Betsy and Mark Mahoney\*  
 Ms. Marie Manson  
 Granger Marchman\*  
 Ms. Jo Marica  
 Ms. Helen Marine  
 Margaret Marion\*\*  
 Cindy K. Martin\*\*  
 Nick and Nancy Martin\*  
 Dana and Ray Massey\*  
 Mr. and Mrs. William Matheson  
 Kit and Charles Matthews\*\*  
 Mr. and Mrs. Stewart D. Maurice\*\*  
 M C Horse Services, LLC  
 Mr. and Mrs. John H. McCall\*\*  
 Mr. and Mrs. Liam McGinley\*  
 Ms. Ouisha Naylor McKinney  
 Dr. and Mrs. James McMillen\*\*  
 Mr. and Mrs. John McMurtrie  
 Vicki McNair\*\*  
 Robert and Betty Meadows\*\*  
 Mr. Deon R. Mealing\*  
 Dr. Charles Mess  
 Cathy Ann Miller and Family\*\*  
 Mrs. Daniel Miller  
 Mark and Pat Miller\*  
 Larry and Kathy Milner\*\*  
 Mr. Don Moniak and Ms. Karen Peck-Moniak\*  
 Mr. Paul R. Monson  
 Earle and Diana Moore\*  
 Hammond and Tanja Moore\*\*  
 Betty Murdock\*\*  
 Frank and Shirlee Musick\*  
 Mr. and Mrs. Paul Musick\*  
 Mitch and Jessica Mussetter\*  
 Ms. Carole L. Myrick  
 Catherine Clay and John R. Neal\*\*  
 Beth and Bob Newburn\*\*  
 Mr. Edward L. Newburn\*\*  
 Charles and Rosemary Newton\*\*  
 Michael and Leigh Norton\*  
 Ms. Ite O'Higgins  
 Charles Onstead, MD\*\*  
 Jim and Wendy Parker\*\*  
 John and Carole Paveglia\*\*  
 Steve and Mary Pearcy\*  
 Dr. and Mrs. John Pearson  
 George and Frances Pepper\*\*  
 Cecilia and Julius Pellegrino\*  
 Patricia Pennington\*  
 Sandy Perkins\*\*  
 Dr. and Mrs. Kenneth Perrine\*\*  
 Mr. and Mrs. Albert H. Peters, Sr.\*  
 Mr. and Mrs. Shane Phillips  
 Mr. and Mrs. Lee Poe, Jr.  
 Peggy Pruitt\*  
 Mrs. Conni Y. Purciarele\*\*  
 Dennis and Marcia Quinn\*\*  
 Mr. and Mrs. Robert Quinn  
 Mr. and Mrs. William Raab\*\*  
 Mrs. Monique S. Rabin  
 Ms. Geri Rapp  
 Keelin Redmond and Lewis Vannote\*  
 Randy and Debbie Reed\*  
 Buzz and Sallye Rich\*  
 Mr. J. Robert Richards  
 Carol Richardson\*\*  
 Dr. Kerry and Christine Ridgeway\*  
 Wesley and Connie Ripple\*  
 Ashley Riviere\*  
 Camden Riviere\*  
 Mr. and Mrs. Royal Robbins\*\*  
 Jack and Carolyn Roberts\*\*  
 Pamela A. Robinson\*\*  
 Tom and Chris Rolka\*  
 Linda Rooney\*\*  
 Joyce P. Ross\*\*  
 Gil and Jane Anne Royal\*\*  
 Steven Rucker\*  
 Penny and Les Rue\*  
 Betty and Greg Ryberg\*  
 Jill Ryon\*  
 Barbara Rystrom and Greg Weis\*\*  
 Marilyn and Dean Sackett\*\*  
 Tom and Jo Santay\*\*  
 Mr. and Mrs. Paul C. Sauerborn\*  
 Tim and Shelly Schmidt\*\*  
 Bill and Melissa Scott\*\*  
 Mackey and Wanda Scott\*  
 John M. Seabrook\*\*  
 Ms. Elaine Sent  
 Jack and Barbara Sependa\*  
 Mr. and Mrs. George Sewell\*\*  
 Virginia and Harry A. Shaw IV\*  
 Paul and Mary Helen Simons\*  
 Ms. Alexandria Simpson  
 Scott and Mary Ruth Singer\*\*  
 Darlene Smalley\*  
 Hank and Jenna Smalling\*\*  
 Ms. Brigitte Smith  
 Dr. Corbin and Dr. Karen Smith\*\*  
 Gary E. Smith and Helen Belencan\*\*  
 Pascal Smith\*  
 Paul and Elizabeth Smith\*\*  
 Al and Cindy Snell\*\*  
 Mrs. Susan Sorenyi-Sander  
 Ms. Mary V. "Ginny" Southworth  
 Mr. James F. Sproull  
 Robert and Mary Ethel Stack\*\*  
 Judith Stanton\*  
 Mrs. Louise H. Stephaich\*\*  
 Grant J. and Clarise Stephens, Jr.\*\*  
 Mr. and Mrs. B. Albert Stern, Jr.  
 Todd Stilp\*\*  
 Kenneth and Jean Stine  
 Mr. David Stinson  
 Robert A. and Patricia D. Stokes\*\*  
 Carl and Linda Strojanc\*\*  
 Patty and Gary Stumbaugh\*\*  
 Jennifer J. Thayer\*  
 Dale and Marilyn Theesfeld\*  
 Richard P. and Barbara T. Thomas\*\*  
 Mary Lu Thompson\*  
 Willard and Carol Thompson\*\*  
 Rickie and Pamela Thornton\*\*  
 Thrivent Financial For Lutheran's Foundation  
 Ms. Liz Timmons  
 Camille Tomaini\*\*  
 Anne Torreyson Magerkurth and Win Magerkurth\*  
 Diane Toth\*  
 Mr. and Mrs. F. A. Townsend, Jr.  
 Toi Trent and Sandy Harris\*\*  
 Mr. and Mrs. C. Douglas Tribert\*\*  
 Dr. Judy Tubman  
 T. Bradley and Lisa Tucker and Family  
 Mr. and Mrs. W. Bennett Tucker\*\*  
 Mr. and Mrs. Robert M. Tyson, Jr.  
 Jim and Laurie Underwood\*\*  
 Ms. Tiiu Vainu\*\*  
 Bob and Jan Van Buren\*  
 Michael R. Van Every\*\*  
 Dick and Pam Verenes\*\*  
 Sandi Vogus and Carolyn Nelson\*  
 Ms. Adrianna von Pein  
 Jim and Phoebe Walters\*  
 Sara P. Wampole\*\*  
 Greg and Christina Warfield\*\*  
 Betsey and Bernie Warren\*  
 Mr. and Mrs. John H. Warren, III\*  
 Gracie and Jerry Waters\*  
 Wallace K. Watkins\*\*  
 Richard and Diane Watson  
 Rich and Jan Waugh\*  
 Mr. Thomas Weeks  
 Michael and Lisa Wells\*\*  
 Bill and Sue Western\*\*  
 Mr. and Mrs. James Wetzel\*\*  
 Whitney Trustees  
 Mr. and Mrs. George G. Wicks  
 David and Erika Widener\*  
 Dr. Charlotte and Boyd Wiedenman\*\*  
 David Wiest\*  
 Kenny and Mimi Wiland\*\*  
 Nancy Wilds\*\*  
 Ann Willbrand\*\*  
 Terry and Eleanor Willows\*\*  
 Ms. Victoria Wilson  
 Mr. and Mrs. Crane Wilson  
 Bill and Marilyn Winn\*  
 Ms. Laura Witham  
 Phil and Mary Woolhiser\*  
 Mr. and Mrs. Clark H. Woolley  
 Mr. Paul Yarmey  
 Ms. Julie Zapapas  
 Anna W. Zouck\*\*



# SILENT AUCTION AND IN-KIND CONTRIBUTORS

Many Thanks to Our Silent Auction Donors and Other In-Kind Contributors

- |                                       |  |                                |
|---------------------------------------|--|--------------------------------|
| A. B. Beverage                        | Cote Designs Floral                      | Oak Manor Saddlery             |
| Mr. and Mrs. Barry Acord              | Mr. and Mrs. John Dabney                 | Mr. and Mrs. Julian Peabody    |
| Aiken Barn, Bed and Breakfast         | Dinner Bell                              | Dr. and Mrs. Kenneth Perrine   |
| Aiken Saddlery and Supply             | Ms. Taryn Hartnett Eicher                | Ms. Chris Powers               |
| Mrs. Karen L. Alexander               | Flat Branch Hounds                       | Mr. Scott D. Riviere           |
| Ms. Linda Algar and Mr. Scott Farrell | Dr. and Mrs. Taylor Garnett              | The Saddle Doctor              |
| All Star Rents                        | Mr. Jean-Paul Gautier                    | Stoptight Deli                 |
| Antique Emporium                      | Mike Gorman Lightning Protection Systems | Ms. Jill Ryon                  |
| Mr. and Mrs. Bill Beacham             | Mr. and Mrs. Stephen Groat               | Dr. and Mrs. Harry Shealy      |
| Nancy Bell                            | Mrs. W. Gibbs Herbruck                   | Stephanie Sheridan             |
| Mr. and Mrs. William J. Blalock       | Mr. and Mrs. Thomas Hill                 | M. Smart Custom Framing        |
| Blue Ribbon Chefs                     | Ms. Stephany Hitchcock                   | Mr. and Mrs. David Smith       |
| Bone-I-Fide Bakery                    | Mr. and Mrs. Robert Horning              | Southern Saddlery              |
| Mr. and Mrs. Barry Bornstein          | Mrs. and Mrs. Michael Hosang             | Southworth Photography         |
| Mr. Tom Bossard and Mr. Len Cherry    | Houndslake Country Club                  | The Stable on the Woods        |
| Dr. and Mrs. I. Lehr Brisbin          | Mrs. Susie Howard                        | Ms. Debby St. Clair-Zion       |
| Ms. Nancy A. Bush                     | Howell Printing Company                  | Stir the Pot, Inc.             |
| Mr. and Mrs. Larry E. Byers           | Mrs. Diana Hunt                          | The Tack Room, Camden          |
| Ms. Lynn Carlisle                     | International Ventures, Ltd.             | Tea Garden Gifts               |
| The Carolina Real Estate Company      | Mr. John R. Jacobs                       | Mr. and Mrs. Mark Thompson     |
| Carriage House Inn & Gifts            | Ms. Dana S. Jolley                       | Linda Tinkler                  |
| Mr. and Mrs. Frederick J. Chamblin    | Mr. and Mrs. David King                  | Mr. and Mrs. William H. Tucker |
| Cold Creek Nurseries                  | Ms. Alice Knowles                        | Mr. and Mrs. Nick Vasileff     |
| Mr. and Mrs. Alan L. Corey, III       | Mr. Steve Leninski                       | Mr. and Mrs. Francois Verglas  |
|                                       | Linda's Bistro                           | The Willcox                    |
|                                       | Mrs. Linda Knox McLean                   | Betsy Wilson-Mahoney           |
|                                       | Middleton Place Hounds                   | Ms. Sandra Wohlers             |
|                                       | Mr. and Mrs. Jeff Minton                 | Georgianna Conger              |
|                                       | New Bridge Polo and Country Club         | Wolcott                        |
|                                       |  | York Cottage Antiques          |

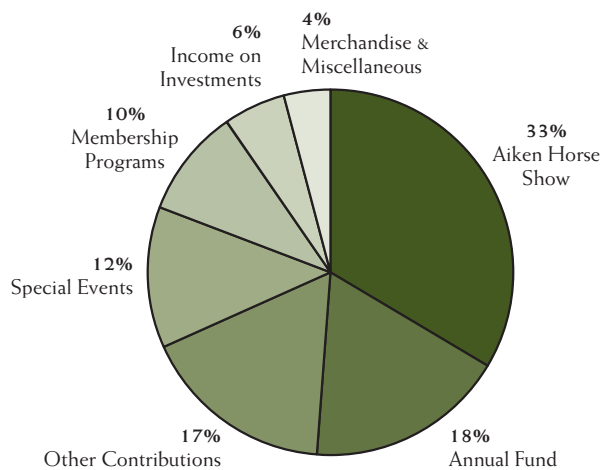


P.O. Box 1702  
Aiken, SC 29802

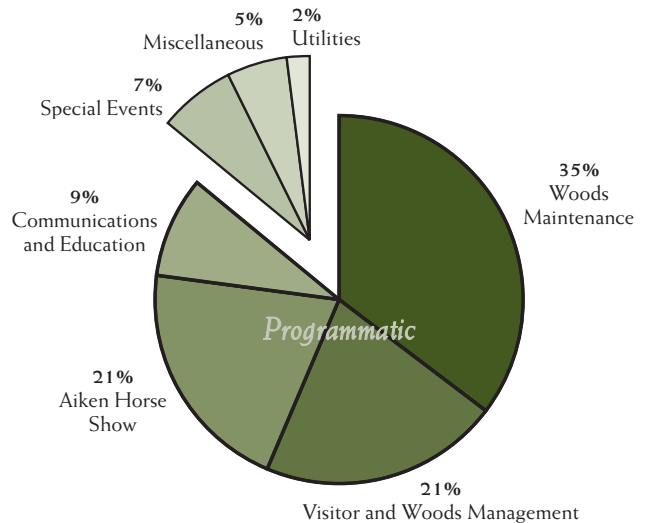
RETURN SERVICE REQUESTED

PRSRRT STD  
US POSTAGE  
**PAID**  
AUGUSTA GA  
PERMIT 346

## OPERATING INCOME



## OPERATING EXPENSES



## AIKEN HORSE SHOW GOLD SPONSORS

Boots  
Bridles &  
Britches



## AIKEN HORSE SHOW SILVER SPONSORS

